

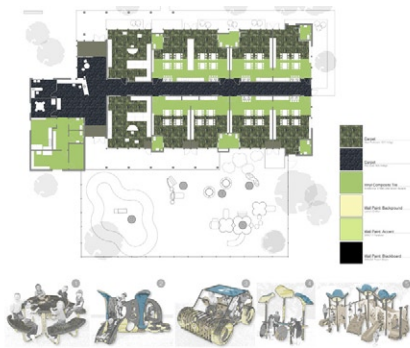
# The Harmony School

Princeton Forrestal Village

As part of a long-term re-master planning for Princeton Forrestal Village designed by KSS, the Harmony School will move to a new site well suited for its young day care, preschool and pre-kindergarten population. The scale of the new site and building will be inviting and engaging for its primary users, many of whom are under 3 feet tall.

KSS designed the building and outdoor play areas to capitalize on the site's proportions. The design gives the school a residential rather than institutional experience. Wood windows and trim, cement board siding, and intimate front and back porches help parents feel as if they were dropping off their kids at a neighbor's house. A gable over the administrative area gives the school prominence in the village. Classrooms open directly out to playgrounds, allowing teachers to see their students.

Because the project was developer driven, KSS designed the facility with enough flexibility to accommodate a range of other uses, such as an office or dentist office. The versatility supports the clients' strategic planning for the long term.



## Client

The Harmony Schools with Mack-Cali and Picus Associates

## Location

Princeton, New Jersey

## Program

Pre-kindergarten, preschool and daycare center for 160 children, 6 months to 6 years old

## Size

10,000 sf

## Features

Classrooms with cubbies, bulletin boards, toilets, and toy shelves; administrative suite, lobby, conference room, kitchen, laundry, native plant garden